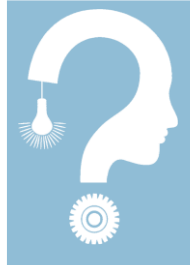


## PSY 310 – 2021 Spring

# Cognitive Processes



### Instructor Email

Olesya Blazhenkova  
olesya.blazhenkova@sabanciuniv.edu

### Class Schedule

**Asynchronous: Lectures** are prerecorded  
**Synchronous: Presentations** are on Thursdays 9:40 – 10:30 (or 10:40 and 11:30 after exams); **Exams** are on Thursdays 9:40 – 10:30.

Join Zoom Meeting  
<https://sabanciuniv.zoom.us/j/96795845665?pwd=ZDJXbHhuYVo4TkdkK aERUZVJQQ3Vodz09>

Meeting ID: 967 9584 5665  
Passcode: 2167345

### TA Email

Belgin Deryalar  
belgind@sabanciuniv.edu

### Office Hours

By appointment on Thursdays between 10:40 and 11:30

## Course Description

Cognitive psychology is the study of human mind and how it works: how we perceive, remember, and reason. In this course, you will learn how human thought processes are organized, how they affect our everyday behavior, and what are their underlying brain mechanisms. Topics include but not limited to perception, attention, memory, learning, imagery, language, expertise, problem solving, and creativity. This course will present an overview of these topics, focusing on understanding major theories, research findings, and their practical applications.

At the end of this course, you should be able to:

- demonstrate the knowledge of the key concepts in cognitive psychology
- use cognitive psychology principles in understanding human behavior

## Course Structure

### Modules

Course is organized in 2 modules with a separate exam at the end of each module.

### Readings

The readings from a variety of sources including journal articles, will be uploaded.

## Workload and Evaluation

### 85 % Exams

There will be 2 exams in this course. Each exam will involve questions covering materials from lectures and demonstrations. Exams 1 and 2 will make 40%, 45% of your grade. There will be no final exam.

Students who fail to show up for any of the exams indicated in the Syllabus without a valid excuse and not taking the make-up examinations for such exams will receive N/A as their final grade. Make-up policy is strict. If you have an official excuse (e.g., medical) for missing an exam, present the report within a week after the exam. The format of the make-up exams or assignments may or may not match the original exam. All make-ups are given at the end of the semester.

### 5 % Presentation

Each student is required to make one presentation on a topic related to the course materials. The papers for presentations will be posted as the course progresses.

### 5 % Lecture-based assignments

The assignments will be included in the lectures.

### 5 % Quiz

Quiz will be given during the last week of classes.

### Research Participation (up to 5 bonus points = 10 Sona research points):

Students can optionally serve as participants in research that is run by Sabanci University researchers. By participating in research, you can get extra points. For this course, you will be able to earn up to 5 bonus points (1 research point equals ~ 30 minutes of research participation). 10 sona research points (10 RPs) will be converted to 5 bonus points added to your overall total at the end of the semester. More information on the available research projects will be provided during the semester. You will be able to sign up for the experiments and get your research participation points through the online Sona system at <http://sabanciuniv.sona-systems.com>. Please, carefully read the Guide for Students: Sabanci University Experiment Credits System (Sona).

### Kahoot bonus point (1 point maximum):

Each of the first 10 winners (considering total points on all kahoots) will get 1 bonus point.

## Grading Scale

A	93-100
A-	86-92
B+	80-87
B	75-79
B-	70-74
C+	65-69
C	60-64
C-	55-59
D+	50-54
D	45-49
F	0-44

## Academic Integrity

It is the student's responsibility to be familiar with Sabanci University's policies on academic integrity, cheating and plagiarism. The assignments and exams you complete for this course should be the results of your own work and reflect your own understanding of the material. Scholastic dishonesty of any kind will not be tolerated.

## Course Schedule

<b>Week 1</b> (25 February)	Introduction to Science of Cognition
<b>Week 2</b> (4 March)	Attention
<b>Week 3</b> (11 March)	Attention and Perception
<b>Week 4</b> (18 March)	Perception
<b>Week 5</b> (25 March)	Perception & Illusions
<b>Week 6</b> (1 April)	<b>EXAM 1</b>  Imagery
<b>Week 7</b> (8 April)	Individual Differences in Imagery
<b>Week 8</b> (15 April)	Imagery and Memory
<b>Week 9</b> (22 April)	Memory
<b>Week 10</b> (29 April)	Learning
<b>Week 11</b> (6 May)	Language
<b>Week 12</b> (13 May)	<i>No class</i>
<b>Week 13</b> (20 May)	<b>EXAM 2</b>  Problem Solving & Creativity
<b>Week 14</b> (27 May)	<b>Quiz</b>  From Face Perception to Social Cognition

Note: Course content, requirements and policies are subject to change at the discretion of the instructor. Changes will be posted on SU COURSE.